

Frequently Asked Questions

What is FWMA?

The Florida Wild Mammal Association, Inc. (FWMA) is a nonprofit 501c3 organization dedicated to the rescue, rehabilitation and release of injured/orphaned wildlife. FWMA is equally committed to educating the public on wildlife issues.



When was FWMA established?

FWMA was incorporated in August 1994 and founded by Chris and Michael Beatty. Their family established the wildlife center in Wakulla County as a place to bring sick, injured and orphaned wildlife in need of treatment and care, where they can recover until ready for release back into their natural habitat.

Who runs FWMA?



FWMA is overseen by a board of directors. Jessica Beatty is the Executive Director and a licensed wildlife rehabilitator who manages the daily operations and animal care at the center. She and her family own and live on the property. The FWMA wildlife center is maintained through the efforts of our small staff supported by volunteer participants in the Wildlife Wonders Education Program. These dedicated individuals help by cleaning cages, picking up supplies, presenting educational programs, animal rescue, grantwriting, supporting fundraising events, preparing publications, and assisting with the general care of the animals. It is because of their hard work that FWMA can care for the many wildlife patients that are brought into the center every day.

Where is FWMA located?

FWMA is located on the south side of Crawfordville, Florida in rural Wakulla County on 6.5 acres of land. The center provides wildlife rescue services and education programs to Wakulla County and three more coastal counties including Franklin, Jefferson and Taylor. This section of Florida coastline extends from Perry westward to Port St Joe and includes an area commonly known as the Forgotten Coast. The property was rezoned as a wildlife hospital in 1996 and is located at 198 Edgar Poole Road, Crawfordville FL 32327. The facility consists of 30 outdoor enclosures, 3.5 acres of deer pens, a small kitchen/laundry room, a wildlife nursery building, an isolation room and a medical building.

How can I contact FWMA?

Phone: (850) 363-2351 [main] or (850)363-1032

Email: info.FWMA@gmail.com

Website: www.FWMA.org

Write to us: FWMA 198 Edgar Poole Road

Crawfordville FL 32327

Find us on Facebook: [Florida Wild Mammal Association](https://www.facebook.com/FloridaWildMammalAssociation)



When is FWMA open?

Permit restrictions do not allow for public display of rehabilitating animals, therefore the facility is not open to the public. Animal rescues are performed by volunteers on a limited basis so if you find sick, injured or orphaned wildlife, please bring them to the center as quickly as possible. (Remember that animals such as baby birds need to eat every 20 minutes – the first hours are critical to survival). Please do not feed or provide water for any animal that you have found. The wrong treatment, however well intended, can be fatal. Our website has further information and you may call the center 24 hours a day for advice about animal emergencies.



What type of animals does FWMA care for?

Although we are called Florida Wild *Mammal* Association, we take care of all native wildlife including birds and reptiles. FWMA also receives exotics and some farm animals on a limited basis. FWMA does not provide care for domestic pets.

In 2022 we provided care for 1,508 animals including:

- 729 wild birds (including hawks, owls, songbirds, seabirds and waterfowl)
- 574 native mammals (including deer, foxes, opossums, squirrels and otters)
- 76 reptiles (including box turtles, gopher tortoises and water turtles)
- 129 exotics, farm animals and domestics (including turkeys, pigs, ducks and exotic turtles)
- 27 permanent education animals (animals that cannot be released back to the wild)



Over 66% of the animals taken in (1,000) were released back into the wild. Another 2% (31) were transferred to other permitted wildlife sanctuaries, 8% (117 domestics/exotics) were adopted out through various sources, and around 4% (65) remained in care at year end. A total of 1,213 animals brought to FWMA last year survived and were given a second chance at life.

What is the charge for taking care of wildlife patients?

There is NO charge to bring any animal to FWMA for treatment, though charitable donations are deeply appreciated to help support the cost of their care. Animals are treated until recovery and ready for release. Most of the animals brought to FWMA are sick or injured and require veterinary care, natural diets and specialized caging. For those with injuries considerable enough to prevent their return into their natural habitat, FWMA either places them with another permitted education facility or provides a permanent home at FWMA where they often become the wildlife ambassadors within our educational programs.



How many animals are treated at FWMA?

Animal intake ranges between 1,000 and 1,600 each year. The caseload has exceeded one thousand patients for 6 years straight as the demand for services continues to rise.

What types of injuries are most common in the animals FWMA receives?



Wildlife injuries, such as being hit by cars, caught in fences, caught by cats or dogs, are becoming part of our daily caseload. In most cases animals become sick, injured or orphaned due to interaction with humans and/or their pets. Natural disasters such as the violent storms that can bring destruction to the Florida Panhandle are just as deadly to wildlife as they are to humans. We also see many animals caught in fishing lines, shot, made sick from pollutants, and hung in fences. Although most of our patients are brought in because of these reasons, we have also provided care for animals suffering with West Nile, distemper, tetanus and lung flukes and other parasites. FWMA works closely with Wakulla County Health Department and Wakulla County Animal Control during outbreaks of any disease.

What is the busiest time of year for FWMA?

FWMA maintains a full schedule year round. The main facility is open all year and requires around 22 staff hours per day to maintain numerous outdoor habitats and the medical building. Our busiest time of the year is from March through October that we refer to as “Baby Season”. The phone literally rings non-stop, and this is a great time to volunteer! This is the time of year when an assortment of injured and orphaned wildlife is brought to the center for treatment and care.



Many of these patients are baby birds that require hand feeding every 20 minutes from sunup to sundown, and orphaned mammals being fed every 4 hours throughout the day and night. Therefore, the nursery remains open from 7 am to 8 pm every day until Baby Season ends. At the end of Baby Season the nursery is used to winter over a variety of other patients. The nursery requires 14 staff hours per day.

Does FWMA offer any wildlife education programs?

Yes, FWMA offers the local community a wide variety of educational programs. The Wildlife Wonders Education Program is administered at our center and provides young people with the unique opportunity to learn about wildlife by working hands-on with our wildlife patients under close supervision. Programs are based upon available resources and may include:

- **Wildlife Wonders Students:** FWMA offers an intern program for a few youths who are chosen from our diverse volunteer programs and need work experience in the animal field. We offer opportunities that involve taking care of the animals and their habitats. This is a great opportunity for students interested in a career in zoology, biology, or veterinary studies.
- **Scholarship Service Hours.** FWMA is approved to provide local students with the opportunity to earn community service hours towards various scholarships.
- **Community Service Hours.** FWMA partners with law enforcement agencies to allow young adults to complete their court-ordered community service hours while helping to care for the animals.
- **Exceptional Student Education (ESE) Program.** The Wakulla High School administers a program that provides training and mentoring to students with disabilities. The students who work at FWMA are given the opportunity to reach their full potential while learning important vocational and life skills.



Project Workdays. Partnerships and collaboration with the FSU Environmental Group, FSU Pre-Vet Club, Americorps, Boy Scouts, Cub Scouts, and Girl Scouts Troops allow students to participate in work / education days at the facility.

These workdays focus on larger projects like cage building, and maintenance and repair. Grounds cleanup is also helpful, particularly after thunderstorms which often scatter debris across the heavily wooded property.

Wildlife Wonders Education Outreach

In addition to onsite programs at the center, FWMA offers educational opportunities throughout the community. During the year we are asked to provide educational program in our schools, local libraries, and to participate in community events. This involves bringing our wildlife ambassadors (educational animals) to the venue and may also include setting up an educational booth with interactive activities.



If you are interested in having our wildlife ambassadors at your event or classroom, please send an email request and include a brief description of your setup.

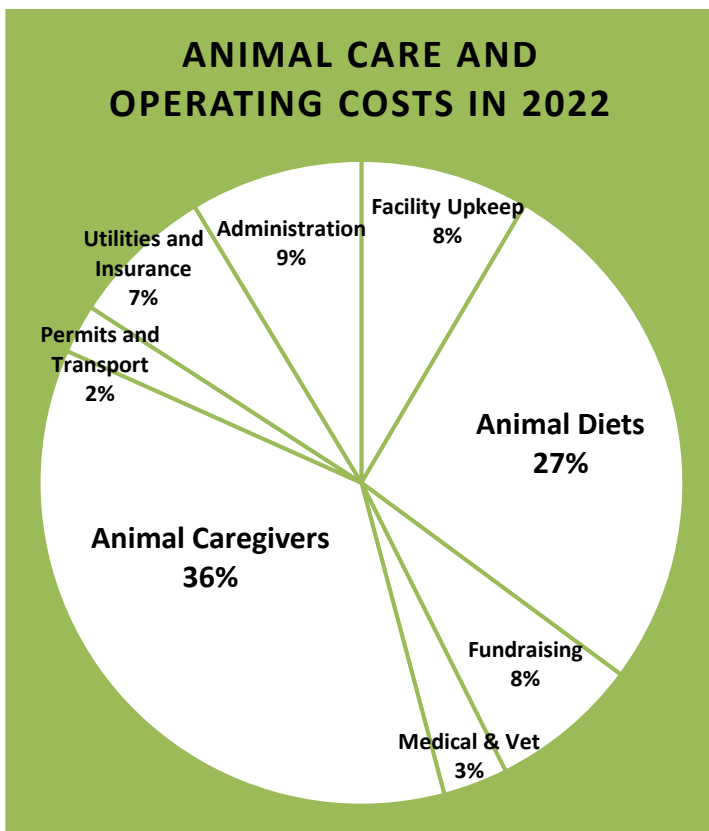
How is FWMA funded?

FWMA has over 400 generous members and donors who contributed \$84,491 during 2022 and our Facebook page has over 5,000 followers. Last year FWMA raised \$72,662 through fundraising activities including newsletter mailings and community events. Grants totaling \$121,960 were received from private foundations. FWMA relies on these funding sources and does not receive assistance from county, state or federal government agencies.



How much does it cost to run FWMA?

In 2022 it cost approximately \$219,630 to run the facility. The largest expenses were \$78,720 for animal caregiving staff and \$58,557 for animal diets. The average cost per animal treated was around \$145.



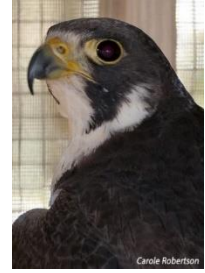
How Donations were used:

| | |
|------------------------|-------------------|
| Animal Caregivers | 78,720 |
| Animal Diets | 58,557 |
| Facility Upkeep | 18,599 |
| Medical & Vet | 7,118 |
| Permits & Transport | 5,398 |
| Utilities & Insurance | 15,807 |
| Administration | 18,987 |
| Fundraising * | <u>16,444</u> |
| Total Operating | \$ 219,630 |

* Fundraising costs are covered by event sponsorships, allowing your charitable donations to be used to directly benefit the animals in our care.

How can I help FWMA?

Donations: Monetary donations are always needed and allow us to purchase animal feed and specialized wildlife formulas, medical supplies, and provide rehabilitative and medical care for the animals. Donated supplies such as lumber, caging, feed and cleaning supplies are always needed and can be dropped off or delivered to the center. For more ideas, please review the Wildlife Wish List on our website.



Volunteer. There are many volunteer opportunities at FWMA. For example: cleaning cages, taking care of the animals at the facility, chopping fruit, folding newspapers, picking up supplies, building bird houses, building habitats, never ending paperwork, taking animals to vet offices, and many, many more activities – if you have an interest or talent, we can put it to use. You must be 16 years or older unless accompanied by an adult. Volunteer hours are 8-11 am and 1-4 pm, every day of the week and no appointment is needed. The facility itself is not a good place for very young children, but there are ideas on our website for projects that can be done at home to help the animals.

Project Workdays: Student and civic groups are welcome to join us. There are always cages that need to be redone, repaired or refurbished which would make a good group or Eagle Scout project. There are also a number of large projects or general cleanup days that require a bigger group (10-20 people). These might include sanding or graveling cages, minor repairs, putting up shade cloth, raking, and picking up tree limbs/sticks. If your group is interested please contact us by email for scheduling.

Fundraising: It is a constant challenge to raise enough money to operate a 24/7 nonprofit wildlife center. Each year we plan a number of fundraising events that require volunteer support besides our own to make it successful. Or perhaps you can host your own fundraising activity to benefit the animals at FWMA. Every donation, no matter what amount, will provide greatly needed resources for the animals in our care.

Thanks so much for your kindness and support!

FWMA Membership Donation Form

Other amount: _____

\$25 Flying Squirrel \$50 Brown Pelican \$100 White Tailed Deer \$250 Bald Eagle

Name _____

Address _____

City ST Zip _____

Email _____ Phone _____

Mail checks to: FWMA, 198 Edgar Poole Road, Crawfordville FL 32327

A receipt for your tax-deductible gift will be provided for your records. www.FWMA.org

A COPY OF THE OFFICIAL REGISTRATION AND FINANCIAL INFORMATION MAY BE OBTAINED FROM THE DIVISION OF CONSUMER SERVICES BY CALLING TOLL-FREE (1-800-435-7352) WITHIN THE STATE. REGISTRATION DOES NOT IMPLY ENDORSEMENT, APPROVAL OR RECOMMENDATION BY THE STATE. Florida Wild Mammal Association, Inc. Registration #: CH7328.